

For smooth vertical mounting of fixtures, receptacles, and GFCIs on sided structures. Paintable. UV rated plastic for long outdoor life.

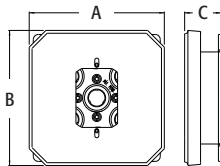
FEATURES AND BENEFITS

- UL Listed electrical box
- Works on all siding types—Before or After the siding is up!
- Flanges may be removed for retrofit work
- Textured, paintable surface
- NM cable connector included
- Works with fixtures, standard receptacles, and GFCIs

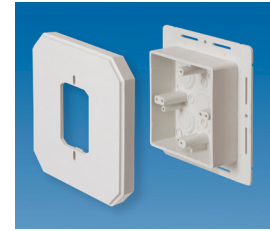
CATALOG NUMBER	UPC/DCI/NAED MFG #018997	SIDING TYPE	STYLE	UNIT PKG	STD PKG	DIM A	DIM B	DIM C
8091F*†	17856	All Types	w/ Flange	25	25	6.650	6.650	1.850
8091FC	10946	All Types	Cover Only	10	10	6.650	6.650	.785
8091FB*†	10945	All Types	Box Only	10	10	6.250	6.250	1.531



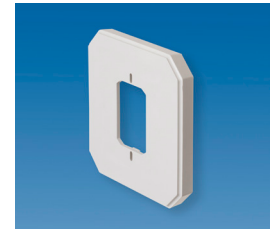
*Add suffix "GC" to Catalog # when ordering in Canada to include grounding clip, for example 8091FCG.
 † For larger fixture mount see 8091FDBLC on pg L-3.



For Installation Instructions 'BEFORE Siding is Up' see below. For Installation Instructions 'AFTER Siding is Up' see page L-1.



8091F



8091FC



8091FB

INSTALLATION INSTRUCTIONS

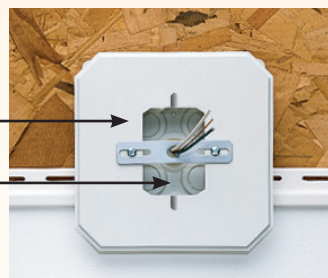
BEFORE Siding is Up...

With Flange (8081F, 8081FDBL, 8082F, 8091F, & 8091FDBL)



1. Before siding is installed, using the flanged style, screw the box to the wall using the holes provided in the flange.
2. Disconnect electrical power. Pull the wire through the knockout of your choice.
3. Install siding around box section and caulk as required.
4. Attach cover.
5. Connect the wires and install the fixture per manufacturer's instructions.

The All-in-One Electrical Box and Cover



Siding block cover is placed over the electrical box.
 The rectangular hole provides access to the wire connections.