

TURING SOLARSHIELD Axis Base

All-In-One Outdoor Solar Video Surveillance
Deployment for Anywhere with Power

LS-KG2-B2A-3Y

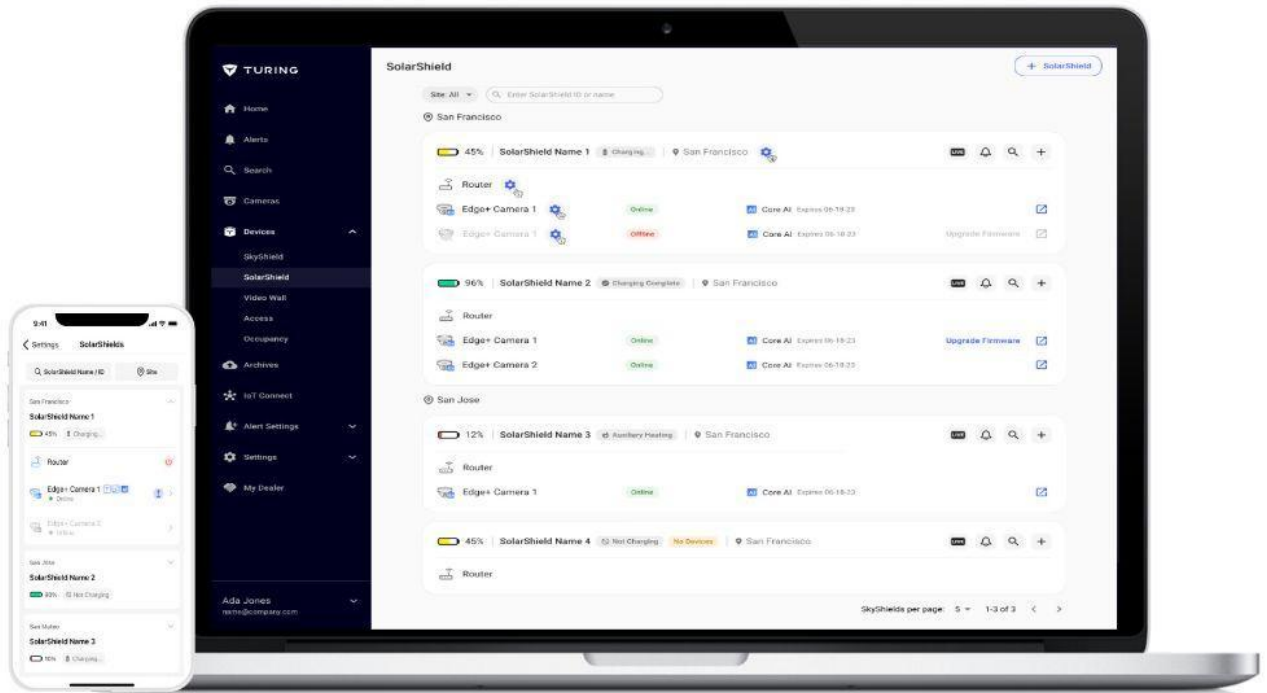
SolarShield Axis Base for 2 Cameras w/ 3Y Licenses Includes:

- Easy rapid deployment
- NEMA enclosure System
- Smart Security, powered by Turing Vision Cloud
- 1x 6 Ports POE Switch(4 POE Ports, 2 Data Ports)
- Built-in 4G/LTE router with remote network management
- Remote management (Battery Status, Battery Reboot.etc)



SIM Carriers Supported





KEY FEATURES

- ✔ Remote Power management including battery reboot and router reboot
- ✔ Remote status monitoring including charging status, battery status and router status
- ✔ Support Time Lapse video creation on the cloud
- ✔ Receive Instant Smart Alerts for Intruders/Trespassers/Person of Interest/Vehicle of Interest via SMS/Email/Push Notifications
- ✔ Remote Live Stream Monitoring
- ✔ Share Live Camera Streams With First Responders
- ✔ Find Events Fast with Smart Video Search and Archive/Share for Future Reference
- ✔ View Live Footage From any Desktop / Mobile Device
- ✔ Flexible Hybrid Storage Locally or on the Cloud

GENERAL	
Dimensions (LxWxH)	Integrated Bracket: 605 × 485 x 265mm Solar Module: TL-S90W: 1000*516*35mm
Weight	54lbs (without camera)
Working Environment	Outdoor: -30°C~+ 60°C (-22°F~+140°F)
Rating	NEMA3R

POWER	
Standard Output Power	TL-S90W: 90W/18V (two included)
Power Interface	Power/Voltage: 90W/18V Integrated Bracket & Smart Controller, Solar Module and Smart Battery

BATTERY	
Battery	26Ah Lithium x 3
Capacity	900 Wh
Working Voltage	9~12.6V
Working Current	10A Max
Operating Temperatures	-30°C to 60°C (-22°F to 140°F)

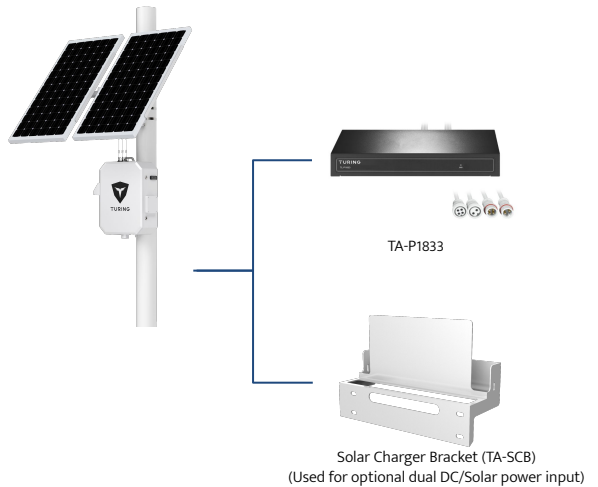
Heat	
Heat	Smart battery module, supports intelligent auxiliary heating, adapts to extreme cold weather

NETWORK(Cellular)	
Standard and Band	LTE FDD: B1/B3/B5/B7/B8/B20/B28 B1/B2/B3/B4/B5/B7/B8/B28 (Optional), B2/B4/B5/B12/B13/B17/B66/B71 (Optional) LTE TDD: B38/B39/B40/B41 HSPA+/HSUPA/HSDPA/WCDMA/UMTS 2100/1900/900/850MHz EV-DO: BC0 CDMA 1x: BC0 EDGE/GPRS/GSM 850/900/1800/1900MHz Cellular: 2 * Standard SMA female antenna interface, characteristic impedance: 50 Ω
Antenna Interface	
SIM/UIM Slot	Standard drawer-type user card interface

NETWORK(POE SWITCH)	
Ports	2*10/100Base-TX RJ45 ports (Data) 4*10/100Base-TX PoE ports (Data/Power)
Max Power Per Port	30W, IEEE802.3af/at
Power Consumption	Standby:<3W, Full load:af<60W, at<120W

OPTIONAL ACCESSORIES

*not included, order separately
With TA-P1833 and TA-SCB, user can use AC110-240 input as alternative power input and build up a Hybrid Solution

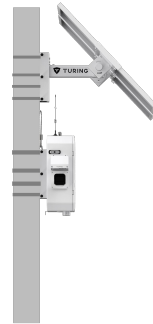


Mount Options / Typical Application

LS-KG2-B2A-3Y

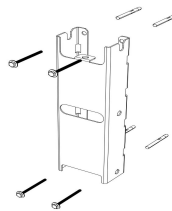
MOUNT OPTIONS Pole Mount

3.9 into 11.8 in dia Stainless Steel Adjustable Clamp x4 (Included)



MOUNT OPTIONS Wall Mount

M8 x 80
(Not included in Product)



Typical Application

Turing products are classified into three levels according to their anti-corrosion performance. Refer to the following description to choose for your using environment.

This model has NO SPECIFIC PROTECTION

Level	Description
Top-level protection	Turing products at this level are equipped for use in areas where professional anti-corrosion protection is a must. Typical application scenarios include coastlines, docks, chemical plants, and more
Moderate protection	Turing products at this level are equipped for use in areas with moderate anti-corrosion demands. Typical application scenarios include coastal areas about 1 mile away from coastlines, as well as areas affected by acid rain.
No specific protection	Turing products at this level are equipped for use in areas where no specific anti-corrosion protection is needed