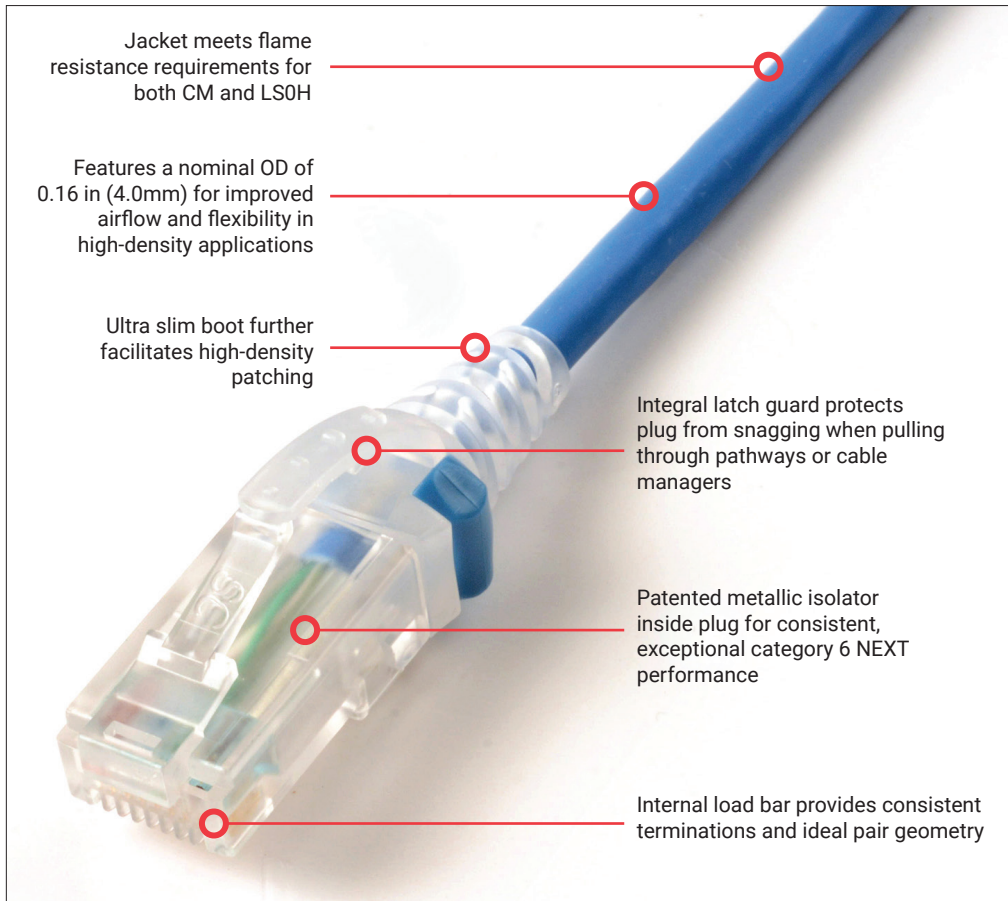


SkinnyPatch® 6 UTP Modular Cords

Regional Availability - North America

Siemon's SkinnyPatch 6 Modular Cords deliver category 6 performance with a reduced cable diameter for improved airflow and increased flexibility in high-density patching areas. The cord's smaller 28 AWG stranded copper construction offers a significantly tighter bend radius for easier cable routing and enhanced cable management, providing pathway space savings in racks and cabinets while facilitating moves, adds and changes in tight spaces. These cords also feature Siemon's patented metallic isolator for exceptional NEXT performance and innovative 360-degree crimp for excellent plug-to-cable strain relief. SkinnyPatch 6 UTP Modular Cords fully support Category 6/Class E channels backed by Siemon's 25-year system warranty.



Standards Compliance

- ANSI/TIA-568.2-E*
- TIA-968-B
- TIA-1096-A
- ISO/IEC 11801-1 Class E
- IEC 60603-7
- IEC 61156-6
- CM: cUL US Listed
- LSOH: IEC 60332-1, 60754, 61034

*Patch cord length is limited to 8 meters for a maximum channel length of 98 meters.

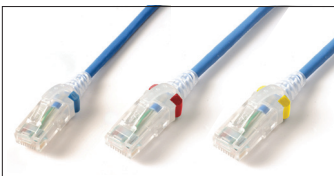
Applications Support

- 1000BASE-T
- 100BASE-T
- 10BASE-T
- HDBASE-T
- IEEE 802.3af (Type 1 PoE)**
- IEEE 802.3at (Type 2 PoE)**
- IEEE 802.3bt (Type 3 PoE)**
- IEEE 802.3bt (Type 4 PoE)**
- Power over HDBaseT (PoH)**

**See table for recommended maximum bundle size.



Data | Power | Reach | Delivered



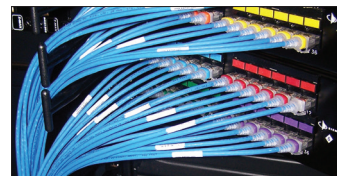
Color Coding

Optional colored clips enable field color coding and can be easily snapped into place without having to disconnect cords.



Excellent Bend Relief

Boot and integrated strain relief ensures minimum bend radius for category 6 performance.



Improved Airflow

Offers improved airflow, accessibility and cable management in high-density applications.



Diameter

Smaller diameter cable significantly reduces bundle and pathway fill for space savings.

Performance Specifications

Electrical

Contact Resistance	20 mΩ
Input to Output DC Resistance	200 mΩ
Min. Dielectric Withstand Voltage (contact to contact)	1000 V DC or AC peak
Insulation Resistance	500 mΩ
Compatibility	Category 6 and 5e
Current Rating @ 25°C (77°F)	1.5 A
Remote Powering	PoE Type 1, 2, 3, 4 and PoH
Attenuation De-rating Factor	1.9

Mechanical - General

Operating Temperature	-20 to 75°C (-4 to 167°F)
Flammability Rating	UL 94 - V0
Green Features	RoHS, lead-free, halogen-free, PVC free
Contact Materials	Copper alloy with contact plating of 50 microinches gold or equivalent
Plastic Materials	Flame retardant thermoplastic
Marking	P/N, length, performance level

Mechanical - Plug

Number of Plug Insertion Cycles	2500
Min. Plug Retention Force	50N (11.24 lbf)
Plug Compatibility	Compatible with RJ45 outlets

Mechanical - Cable

Wire Size (Nominal)	28 AWG 7x36 Stranded bare copper
Cable O.D. (Nominal)	4.0mm (0.16 in.)
Wiring	T568A/B as specified by Part Number
Jacket Type	CM/LSOH
Bend Radius	16mm (0.64 in.)

Maximum Recommended Bundle Size

Application	Current per Pair (mA)	28 AWG Patch Cords
Type 1 PoE (15.4 W)	350	48
Type 2 PoE (30 W)	600	48
Type 3 PoE (60 W)	600	24
Type 4 PoE (90 W)	960	24
PoH (100 W)	1000	24

Ordering Information

SkinnyPatch Category 6 double-ended, 4-pair, 28 AWG UTP stranded modular patch cord, T568A/B, clear boot.

MC6-(XX)-(XX)-28

Length

03 = 0.9m (3 ft.)
 05 = 1.5m (5 ft.)
 07 = 2.1m (7 ft.)
 10 = 3.1m (10 ft.)
 15 = 4.6m (15 ft.)
 20 = 6.1m (20 ft.)

Jacket Color

01 = Black 06 = Blue
 02 = White 07 = Green
 03 = Red 08 = Violet
 04 = Gray 09 = Orange
 05 = Yellow

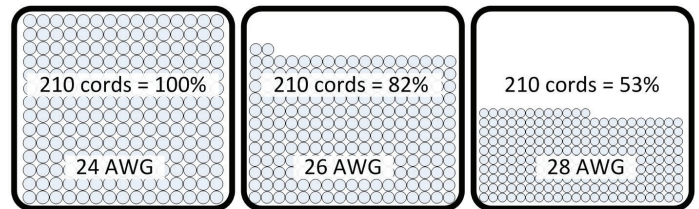
Add "B" to end of part number for bulk project pack of 100 cords

Color Coded Clip, bag of 25

CLIP-(XX)

Clip Color

01 = Black 04 = Gray 07 = Green
 02 = White 05 = Yellow 08 = Violet
 03 = Red 06 = Blue 09 = Orange



Fill Comparison: Category 6 Cords in a 101mm cable manager

24 AWG

26 AWG

28 AWG



Construction

Smaller 28 AWG construction results in a smaller bend radius for easier routing in tight spaces.

Because we continuously improve our products, Siemon reserves the right to change specifications and availability without prior notice.

North America
 P: (1) 860 945 4200

Mexico
 P: (521) 556 387 7708/09/10

Latin America
 P: (571) 657 1950/51/52

Europe
 P: (44) 0 1932 571771

Asia Pacific
 P: (61) 2 8977 7500

Siemon OEM Technologies
 P: (1) 860 945 4213
www.siemon.com/OEM

China
 P: (86) 215385 0303

India, Middle East & Africa
 P: (971) 4 3689743



SCAN TO DOWNLOAD
 SPEC SHEET

www.siemon.com

200_01031_SS_Copper_SkinnyPatch_6UTP_Modular_Cords_NA_RevF 07/25

