



Luminyx Network Video Recorders

NVRs for Every Application—From Small Sites to Enterprises

Luminyx NVRs deliver superior performance with unmatched flexibility. AI-driven analytics, intelligent search, extensive connectivity, and scalable storage provide seamless, reliable video recording and playback.



Intelligent Search Technology

Find people, vehicles, and events instantly with LumiSearch technology.



Long-Range PoE

Deliver PoE power up to 3,000 feet with LumiPower technology.

8K

High-Resolution Recording

Record in resolutions up to 8K for superior clarity and detail.

Luminys NVR Family

- **R3 Starter Series NVRs** offer basic features for the value market.
- **R4 and R5 Mainstream Series NVRs** bring analytics and features that are popular for most video systems.
- **R6 Extreme Series NVRs** is the extreme storage, scalability and analytics for those that need power and performance.

Enhanced Analytics and Intelligence for Security Operations

Analytics by Camera

Many Luminys network cameras offers built-in analytics such as face detection, heat map, people counting, LumiSearch and more. The metadata that is create by the camera can then be used when connect to a Luminys NVR.

Analytics by Recorder

The Mainstream and Extreme series NVRs can create the metadata based on the video stream from a network camera.

Analytic Capabilities

- **Face Detection:** Detect faces in video, enhancing search capabilities.
- **Face Recognition:** Authenticate individuals using their face and a database in the NVR to control access.
- **People Counting:** Monitor entry and exit flows, supporting space management.
- **Heat Map:** Visualize high-traffic zones, aiding in resource allocation and operational planning.
- **Intelligent Motion Detection (iMD):** Reduces false alarms by differentiating between human and vehicle movements.
- **VCA:** Set alerts for boundary breaches to secure restricted areas.

License Plate Recognition (With Luminys LPR Camera)

LPR is ideal for gate and access control, parking management and authentication.

- **Instant Alerts:** Real-time notifications for identified license plates.
- **Automated Recording:** Seamlessly capture and store license plate images.
- **Smart Search Capabilities:** Quickly locate video by plate number, date, or time.
- **No license required.** Use camera stand-alone or with Luminys NVR.



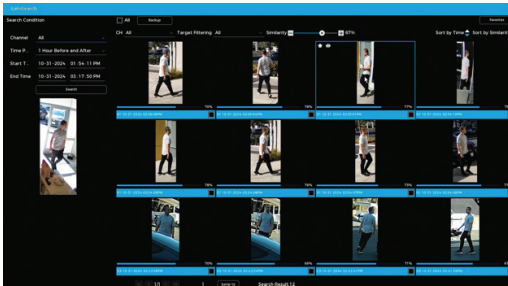
LumiSearch & LumiSearch+

LumiSearch technology provides the fastest way to find, track, and identify targets in recorded video using a reference image. Its standard or Plus version algorithms analyze human body shape, clothing color, and other details to accurately locate where a target appears in footage captured by any LumiSearch-enabled camera and NVR. The **standard LumiSearch** version supports rectangular Line Crossing and Intrusion detection, while **LumiSearch+** offers flexible, irregular line drawing for more customized Line Crossing and Intrusion detection zones.



LumiSearch

- **Efficient Tracking:** Locate individuals or vehicles quickly across feeds with a single reference image.
- **Targeted Searches:** Filter by attributes like clothing or vehicle for rapid retrieval.



LumiSearch in Action

LumiSearch-Compatible Cameras



N5-D LumiDeterrent Series



N5-C LumiColor Series



LumiSearch+

- **Trajectory Tracking:** Visualize movement paths across multiple feeds.
- **Advanced Attribute Search:** Identify by unique characteristics, including animal detection.
- **Pre-Search by Intrusion (Irregular Shape):** Draw custom search areas with irregular shapes.
- **Pre-Search by Line Crossing:** Detect unauthorized entry across designated points.

LumiSearch+-Compatible Cameras



N5-L LumiLuxSmart Series



P5-S PTZ Series

LumiSearch+

Animal Detection*

In Playback, New Icon, and Timeline Filtering

Identify and tag animal appearances.

Attribute Search

Tab (Expanded Target Filtering)

Filter human and vehicle targets by top (type of clothing), top color, and bottom color.

Irregular Shape

Draw Freeform Shapes to Define Search Areas

Excellent for narrow hallways, angled corridors, or non-rectangular zones.

Target Trajectory

Upload a .png site map and define zones per camera to visualize and track target movement. Useful for forensic path tracking or movement analysis at across entrances, corridors, or perimeters.

Pre-Search Options

“In Area” and “Crossing Line”

In the bottom left of the playback menu, click the human or vehicle icon. A pop-up will appear with in-area and crossing line search modes.

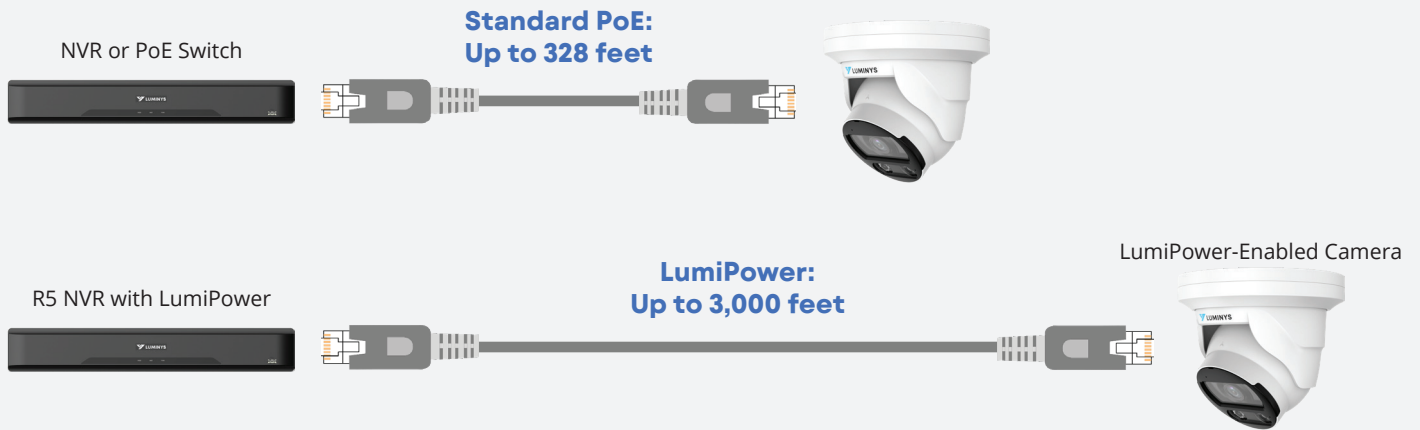
Playback Target Counter

A running daily counter of LumiSearch-detected humans vehicles is displayed on the playback interface.



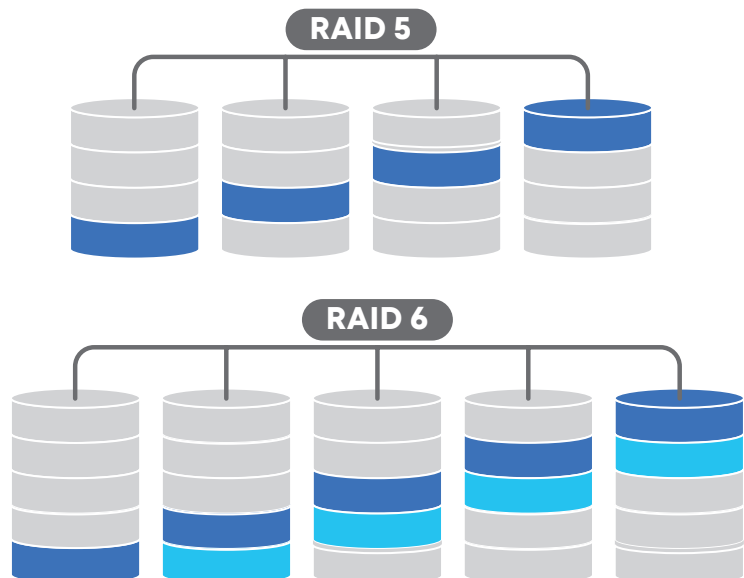
LumiPower is available on ports 1 to 8 on R5 NVR models (R52-8PA, R52-16PA, R54-32PA).

LumiPower technology enables long-distance Power over Ethernet transmission, extending power and data delivery up to 3,000 feet for any LumiPower-enabled camera and NVR. This simplifies installations in larger or more complex environments by eliminating the need for additional power sources or repeaters. LumiPower ensures consistent connectivity and dependable power management, ideal for expansive security infrastructures.







Storage Options

Redundant Array of Independent Disks (RAID) is a method of storing the same data in different places on multiple hard disks to protect data if a drive failure occurs. The R6 Extreme NVR series supports RAID 0, 1, 5, 6 and 10. RAID 5 is the most popular choice for video surveillance applications because of its optimal balance of data redundancy and storage costs. Hot swapping (replacing a failed drive without a system shut down) is supported by all RAID options except 0.



NVR Product Line Overview

				
MODEL	R3 NVR	R4 NVR	R5 NVR	R6 NVR
LUMINYS SERIES	STARTER SERIES	MAINSTREAM SERIES	MAINSTREAM SERIES	EXTREME SERIES
RECORDING				
Number of Channels	4, 8, or 16	8 or 16	8, 16, or 32	32, 64, or 128
Max. Camera Resolution	8MP	16MP	32MP	32MP
Max. Video Output	4K	4K	4K	8K
H.265+, H.265, H.264 Compression	Y	Y	Y	Y
Max. Recording*	160 Mbps	256 Mbps	400 Mbps	1400 Mbps
Fisheye Dewarping	N/A	N/A	Y	Y
ONVIF Profiles	S, T, G	S, T, G	S, T, G	S, T, G, M
STORAGE				
Max. Storage	20 TB	32 TB	64 TB	160 TB
JBOD, RAID	JBOD	JBOD	JBOD	RAID 0, 1, 5, 6, 10
Hot Swap	N/A	N/A	N/A	Y
PHYSICAL				
Ethernet Ports (1 GB)	1	1	1	Dual NIC 2.5 Gbps
Total PoE Ports	4, 8, or 16	8 or 16	8, 16, or 24	N/A
LumiPower PoE	N/A	N/A	Y	N/A
eSATA Port	-	-	Y (32CH)	Y
Rackable, Desktop	Y**	Y	Y	Y
Size	Mini, 1U	1U	1U, 1.5U	2.5U
USB Ports	2	2	2, 3 (32CH)	4
Mouse	Y	Y	Y	Y
SOFTWARE				
WebGUI	Y	Y	Y	Y
LumiViewer	Y	Y	Y	Y
LumiCloud Lite	Y	Coming Soon	Y	Coming Soon
LumiCloud (\$)	Y	Coming Soon	Y	Coming Soon
LumiCenter (\$)	Y	Y	Y	Y
ANALYTICS				
LumiSearch+	N/A	N/A	Y	LumiSearch
Analytics by Camera	Y	Y	Y	Y
Analytics by Recorder	N/A	Y	Y	Y
iMD	Y	Y	Y	Y
VCA	N/A	Y	Y	Y
Face Detection	N/A	Y	Y	Y
Face Recognition	N/A	Y	Y	Y
Video Metadata	N/A	N/A	N/A	Y
LPR (Requires LPR Camera)	Y	Y	Y	Y

Remote Client Software

Luminys offers several remote software management solutions.

Browser-GUI (Built-in)

WebGUI

WebGUI provides the NVR interface via web browser for easy usability.

Included Software

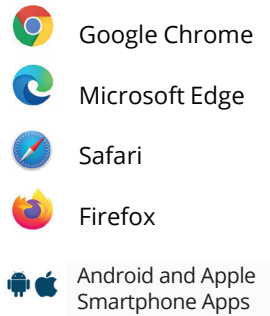


LumiViewer is available as a desktop client or mobile app. It supports up to 128 channels with an optional upgrade to 256 channels with the purchase of a license.



- LumiCloud Lite allows for remote connection, monitoring, playback, search, and device management. It is included with select NVR models.

Web clients are browser-agnostic but do require support of HTML5.



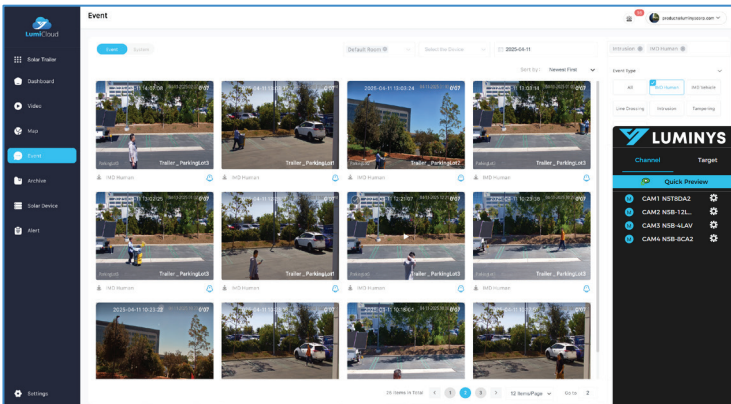
Licenses Sold Separately



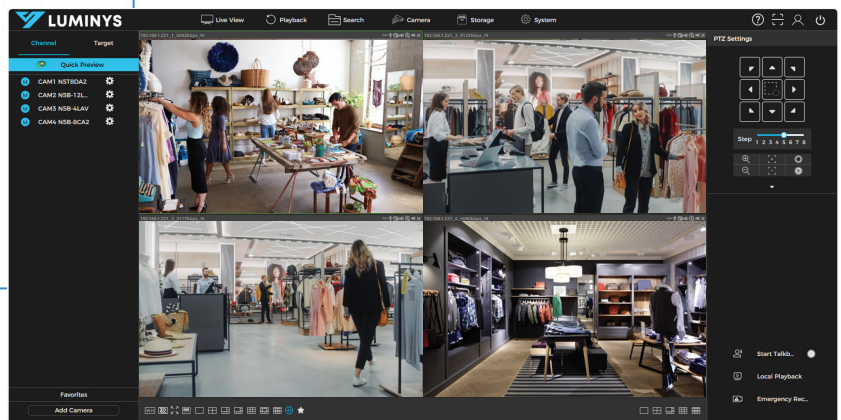
Upgrade to LumiCloud Unity subscription anytime to support additional features such as analytics, cloud recording, event playback, and more.



LumiCenter is a state-of-the-art video management software (VMS) designed to seamlessly integrate surveillance cameras, AI-based analytics, and robust server software with web clients and mobile applications.



LumiCloud interface showing a summary of events stored in the cloud.



WebGUI interface showing a live view of multiple cameras.



Scan to go to our NVR selector and find the best NVR for your application.

