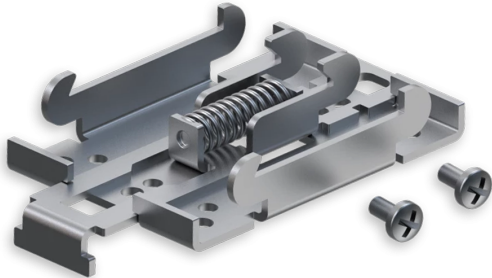


# EASYCELL-DIN

DIN RAIL KIT for EasyCell



## Overview

EtherWAN Systems, Inc. provides a wide range of excellent quality accessories including antennas, power supply adapters and mounting solutions designed to be fully compatible with EasyCell series products.

Our goal is to ensure the long-term success of customers by providing accessories that are tested, validated, and functions as intended by continuously evaluate and enhance the quality control procedures, to guarantee the integrity and performance.

In case you need a solution that is not on our list, please contact us and we will be glad to help. If you need to speak to someone directly, please call the following numbers:

Sales Support (7am-4pm PST):  
(714) 779-3800, Select Option 1

Technical Support (6am-6pm PST):  
(714) 779-3800, Select Option 2

## Specifications

### + Technical Data

**Mounting type**

35 mm DIN Rail

**Material**

Low carbon steel

**Dimensions**

65.2 x 44.2 x 1.5 mm

**Screws included**

Philips Pan head screw #6-32x3/16, 2pcs

**Weight**

57 g

**RoHS compliant**

✓





© EtherWAN Systems, Inc. All rights reserved. 20250725

EtherWAN is constantly developing and improving products. Specifications are subject to change without notice and without incurring any obligation.