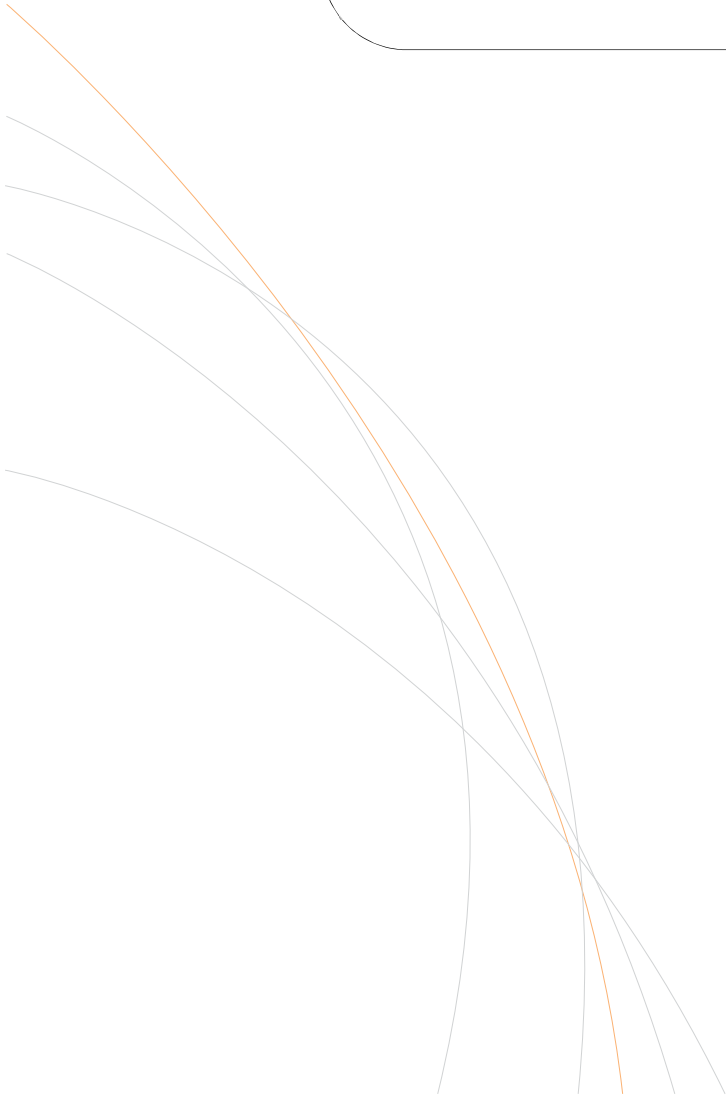




**PoC/PoW Network
Management System
User Manual**



Target Reader

The intended readers of this manual are network administrators and maintainers.

Content Introduction

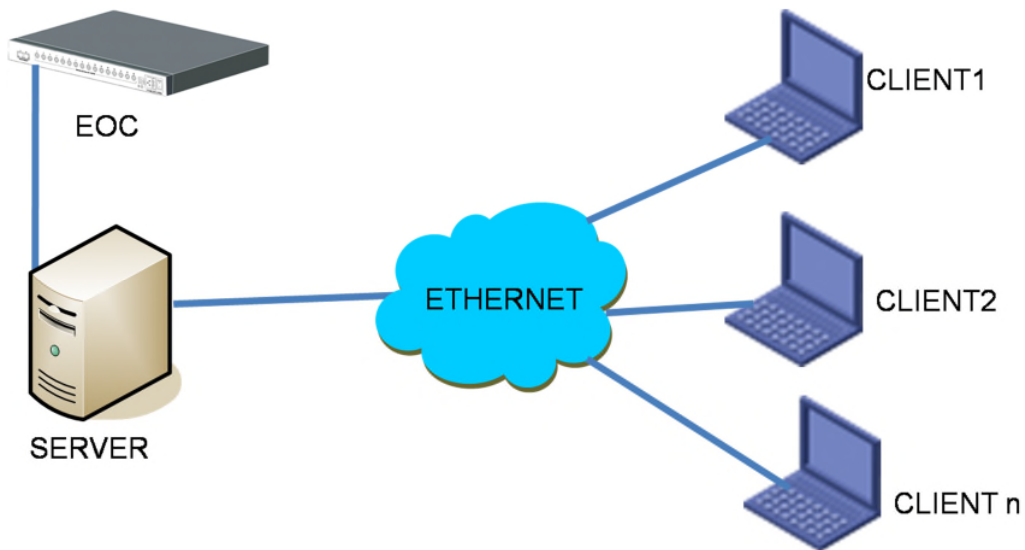
This manual gives a detailed introduction to the operation of the PoC/PoW network management system.

Index

1	Introduction.....	4
2	Operating Environment	4
3	Server.....	5
3.1	Setup	5
3.2	Operating Instructions	5
3.2.1	Login.....	5
3.2.2	Server Configuration	6
3.3	Uninstallation	7
4	Client.....	8
4.1	Setup	8
4.2	Operating Instructions	8
4.2.1	Login.....	8
4.2.2	Connect Server.....	9
4.2.3	Local Parameter	10
4.2.4	Device Resources	11
4.2.5	Working Status Display Panel	15
4.2.6	PoC/PoW Operation Parameter.....	18
4.2.7	Alarm	19
4.2.8	Log.....	20
4.2.9	Lock System.....	22
4.2.10	User Management.....	22
4.3	Uninstallation	25
5	Web Management Interface	26

1 Introduction

This PoC/PoW management system adopts the Client/Server model. The Server is used for management and data collection of the EoC/EoU receivers, allowing the Clients to monitor and control the working status and power supply of the devices. The Server and Clients communicate over Ethernet, as shown in the following diagram.




This manual provides a detailed introduction to the operation of the Server and the Client.

2 Operating Environment

The management software is applicable on the Microsoft Windows XP, Windows 7, and Windows 10. The minimum screen resolution required for the display of the software interface is 1024*768.


3 Server

3.1 Setup

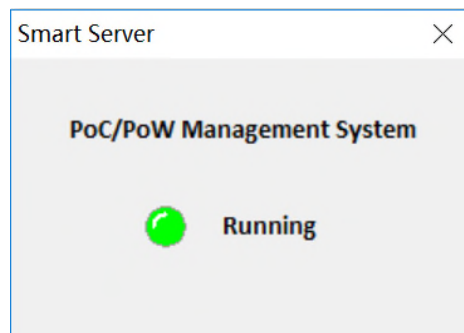
Double click  PoC PoW Management System Server Setup to launch the installer. Follow the prompts to install the Server.

3.2 Operating Instructions


3.2.1 Login

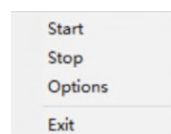
Double click the  SmartServer icon on the desktop to open the Server. If the icon is not found, find the installation directory and open file *PoC PoW Management System > Server > SmartServer.exe*.

The interface is shown as follows:



The green light starts to flash when Server is turned on. Clicking on the Close Tab only hides the window; The program is still running and can be found in the system tray in the lower right corner of your screen.

Double click on the  icon in the system tray to show the window. Right click the icon for the pop-up menu:



<i>Start</i>	Start Server
<i>Stop</i>	Stop Server
<i>Options</i>	Server configuration
<i>Exit</i>	Exit program

3.2.2 Server Configuration


Click *Options* in the menu to enter the *System Configuration* dialog. The configuration items and default values are shown in the graph below.

<i>Network Server Port</i>	Port number for communication between the Server and the Clients. If Client cannot connect the Server, make sure the value of <i>Server Port</i> in Client matches the value here.
<i>Device Port</i>	Port number for connection between the Server and the EoC/EoU devices
<i>Query Interval</i>	Polling interval of EoC/EoU devices by Server
<i>Offline When</i>	Device will be decided as offline after reaching the count of <i>No Data Return</i> .

<i>Log Clear</i>	Logs will be cleared after reaching the count of records.
------------------	---


After modifying the configuration, click *Save* to save the changes or *Cancel* to discard the changes. A device restart will be required after changes are saved. Please do not change the above configuration unless you are network management personnel.

3.3 Uninstallation

To uninstall the software, open file *PoC PoW Management System > Server* under your installation directory, and click  **Uninstall** . Follow the prompts to uninstall.

4 Client


4.1 Setup

Double click  PoC PoW Management System Client Setup to launch the installer. Follow the prompts to install the Client.

4.2 Operating Instructions

4.2.1 Login

Before running the Client, please make sure the Server is online and is accessible to the Client in the network.

Double click the  SmartControl+ icon on the desktop to open the Client. If the icon is not found, find the installation directory and open file *PoC PoW Management System > Client > SmartControl+.exe*.

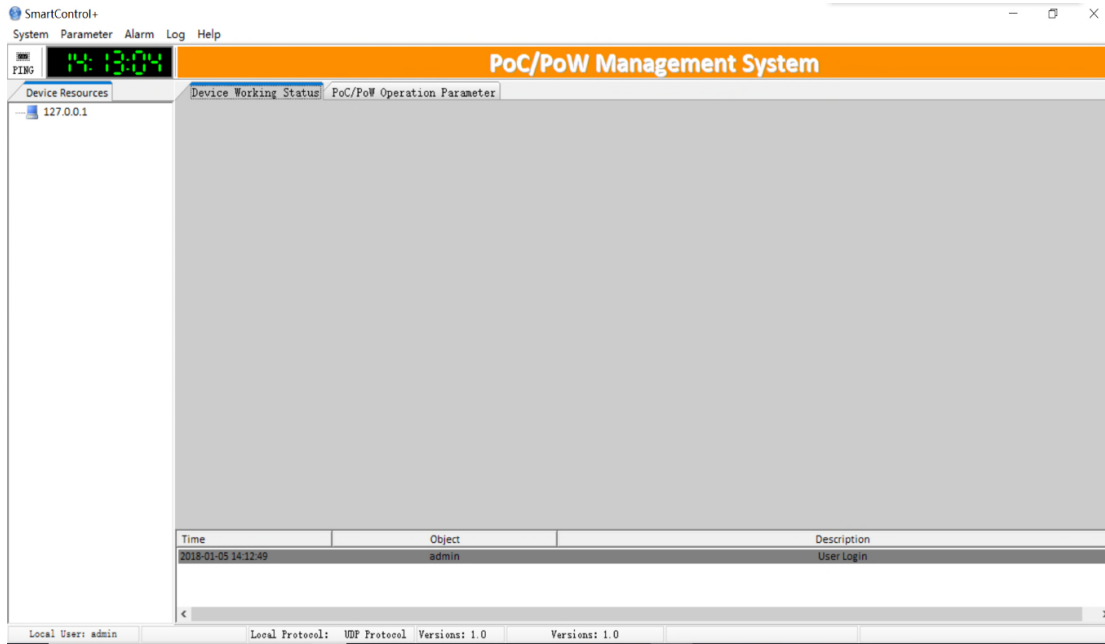


<i>Username</i>	Default username: <i>admin</i>
<i>Password</i>	Default password: <i>admin</i>

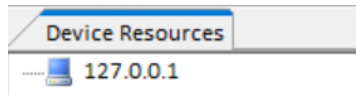
Enter the default username and password for first time login, and click *Login*. If you

encounter problems with login, please contact your local supplier.

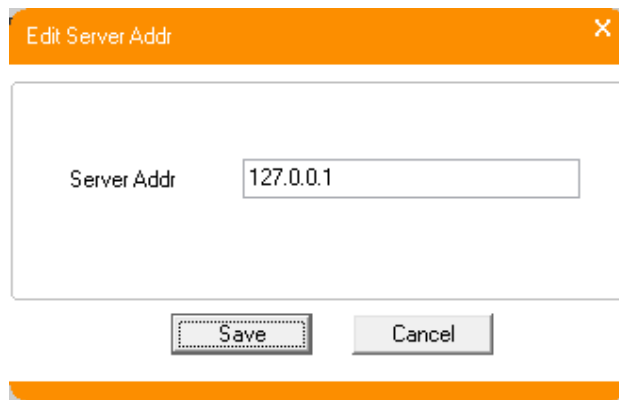
The following screenshot shows the interface after a successful login.



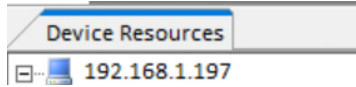
4.2.2 Connect Server





The icon under *Device Resources* shows the default IP address (127.0.0.1) of the Server. To start, you will need to change it to the actual IP address of the computer on which the Server is running. Right click on the address and select *Modify*.



Enter the IP address of the Server and click *Save*. The default IP address is now replaced.



Note that when Server is offline, the  icon will change to  after the IP address change, and the following alarm information will appear in the log list.

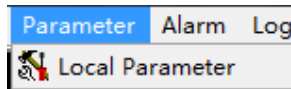
Time	Object	Description
2018-01-05 14:12:49	admin	User Login
2018-01-05 14:16:59	198.168.1.198	Server Offline

To solve the problem, you may check and ensure that:

1. The Server is running.
2. The IP address is input correctly.
3. The *Server Port* value in Client (see 4.2.3) matches the *Network Server Port* value in Server (see 3.2.2).
4. The ports are not occupied by other programs.

If the problem still exists, please contact your network administrator or local supplier.

4.2.3 Local Parameter



The *Parameter* menu includes one sub-menu *Local Parameter*.

Click *Parameter > Local Parameter* to open the *System Configuration* dialog.

System Configuration
✕

Server Port

Query Interval Seconds

Offline When Times No Data Returned

Log Clear Max Records

Note: Please do not modify the above configuration without the manufacturer's instruction. A device restart will be required after changes are saved.

Four parameters can be configured within the dialog:

Item	Description
<i>Server Port</i>	Port number for communication between client and server. If Client cannot connect the Server, make sure that this value matches the <i>Network Server Port</i> value in Server.
<i>Query Interval</i>	Polling interval of EoC/EoU devices by Server
<i>Offline When</i>	Device will be decided as <i>Offline</i> after reaching the count of <i>No Data Return</i> .
<i>Log Clear</i>	Logs will be cleared after reaching the count of records.

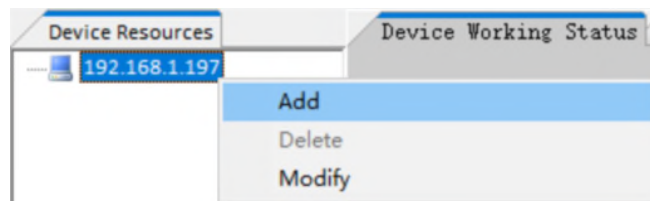
After modifying the configuration, click *Save* to save the changes or *Cancel* to discard the changes. A device restart will be required after changes are saved. Please do not change the above configuration unless you are network management personnel.

4.2.4 Device Resources

➤ Device Management

The system allows EoC/EoU device management operations such as *Add*, *Delete*, and *Modify*.

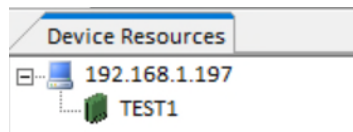
To add a EoC/EoU device, right click the Server icon.



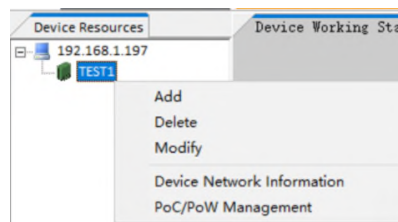
Select *Add* to enter the *Add Device* dialog.

Item	Description
<i>Device Addr</i>	IP address of the device
<i>Device Name</i>	Name of the device (for device identification)

Input the correct device IP address and device name following the hint and click the *Save* button. The new device will appear in the list.

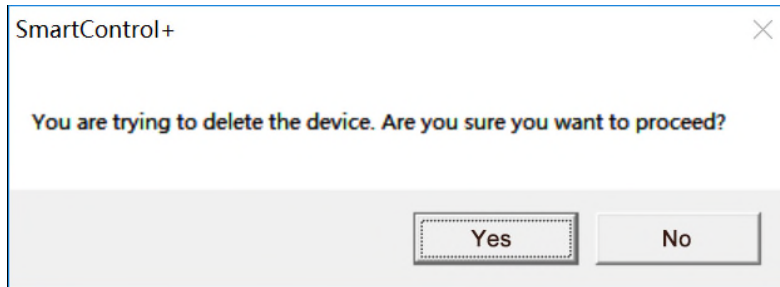


To modify an existing device, right click on the device to show the context menu.



Click *Modify* to enter the *Modify Device* dialog. After changing the *Device Addr* and *Device Name*, click *Save* to save changes. The updated device name will appear in the list.

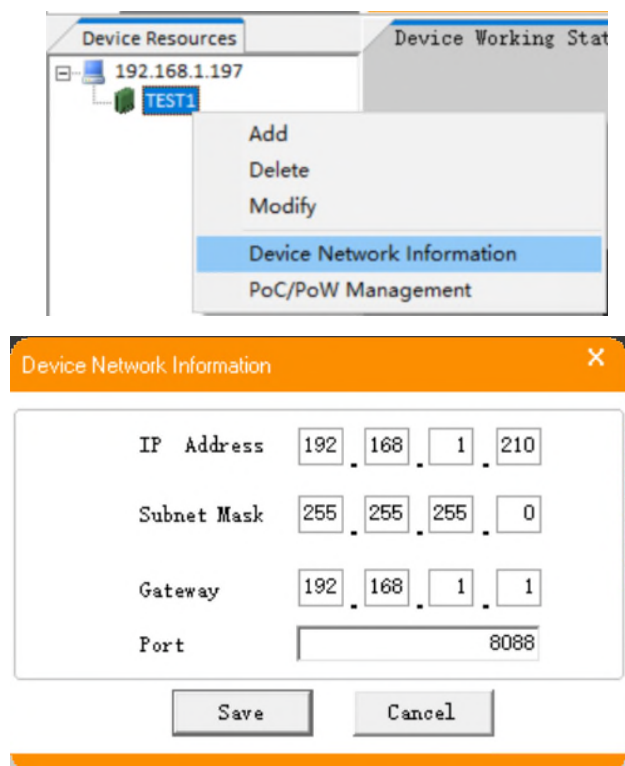
To delete a device, right click on the device to enter the context menu. Click *Delete* to enter the confirmation dialog.



Click *Yes* to delete the dialog or *No* to discard the change. The deleted devices will not be displayed in the list.

➤ Device Network Configuration

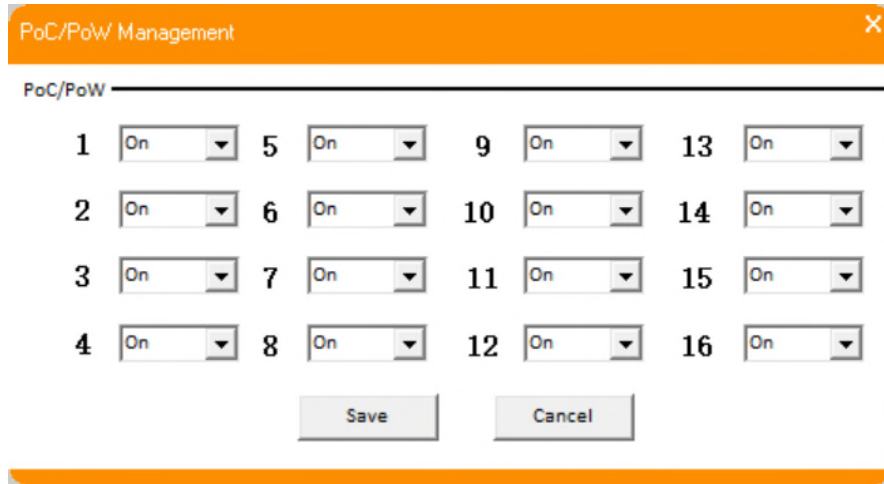
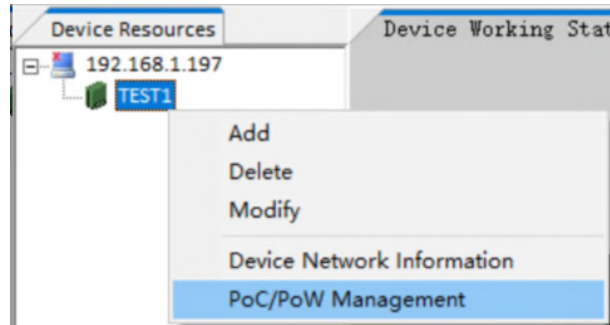
To change network settings of any device, right click on the device, and click *Device Network Information* to enter the configuration dialog.



Configure IP address, subnet mask, gateway and port following the hint.

➤ PoC/PoW Management

To change PoC/PoW status of any device, right click the device name, and click *PoC/PoW Management* to enter the configuration dialog.



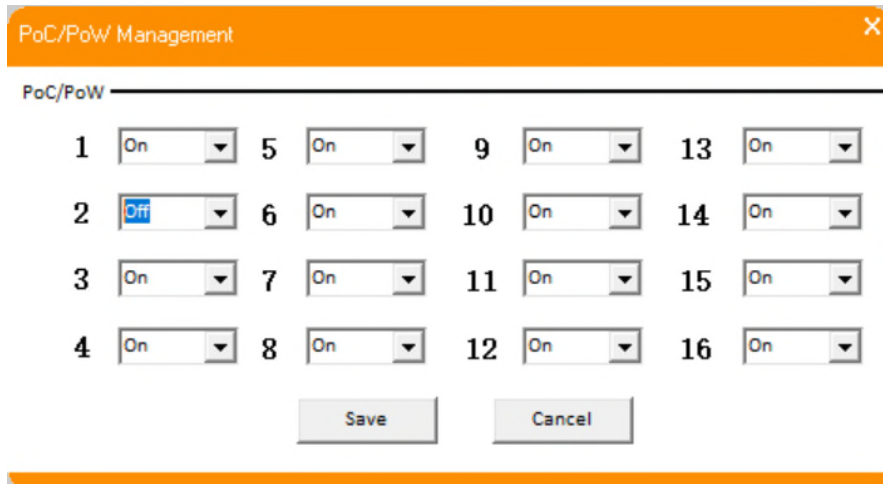
The dialog shows the PoC status of all ports. The default status is *On*. To shut down PoC of a certain port, toggle the PoC status to *Off*. Click the *Save* button to save any changes or *Cancel* to discard the changes.

Example: Shutting down PoC of port 2 of the following device (display panel for different devices may vary).

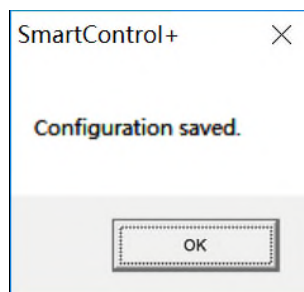


Steps:

1. Toggle the PoC status of port 2 to *Off*.



2. Click the *Save* button.



3. When the configuration is changed successfully, a log will be created in the log list, and the indicator of port 2 should turn red, showing that port 2 has been shut down.



4.2.5 Working Status Display Panel

This area shows the power, connection, alarm, PoC/PoW status of the EoC/EoU devices, for convenient device monitoring.

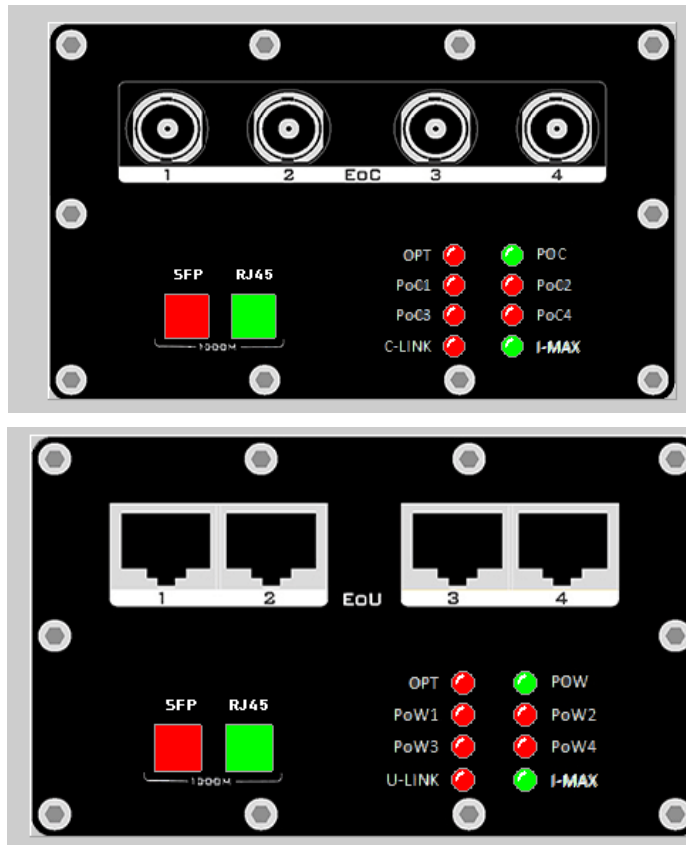
All status indicators here correspond to the EoC/EoU central terminal indicators.

➤ 8/16-Channel EoC/EoU





Item	Description
<i>PWR</i>	Power indicator: Green light with power input; Red light without power input.
<i>C-LINK</i> <i>/U-LINK</i>	EoC connection status indicator (4 remote units share one light): Green light with 1 or more than 1 EoC connection; Red light with no EoC connection;
<i>IP-LINK</i>	Network port connection status indicator: Green light when port is connected; Red light when disconnected.
<i>I-MAX</i>	Current warning indicator: Red light if four-channel total power consumption > 176W; Green light if four-channel total power consumption < 176W.
<i>POC</i> <i>/POW</i>	PoC power supply indicator: Green light with PoC power supply; Red light without PoC power supply.

➤ 4-Channel EoC/EoU



Item	Description
<i>SFP</i>	Optical link indicator: Green light with optical link; Red light without optical link.
<i>RJ45</i>	RJ45 link indicator: Green light when connected; Red light when disconnected.
<i>OPT</i>	Optical signal indicator: Green light with optical signal; Red light without optical signal.
<i>PoC/PoW 1-4</i>	PoC/PoW power supply indicator: Green light with PoC power supply; Red light without PoC power supply.

➤ Device Information Panel

Device Name	TEST1	Device Addr	192.168.1.210
Online Status		Working Status	

Item	Description
<i>Device Name</i>	Current EoC device name
<i>Device Addr</i>	Current EoC device address
<i>Online Status</i>	Current device connection status: Green indicates normal connection; Red indicates disconnection.
<i>Working Status</i>	Current device operation status: Green indicates normal operation; Red indicates abnormal operation.

4.2.6 PoC/PoW Operation Parameter

PoC/PoW Management System

Device Working Status
PoC/PoW Operation Parameter

Click *PoC/PoW Operation Parameter* to view the operation data.

PoC/PoW	Current (mA)	Voltage (DC V)	Power (W)
1	18.921	47.211	0.893
2	0.000	0.000	0.000
3	0.000	0.000	0.000
4	0.000	0.000	0.000
5	0.000	0.000	0.000
6	0.000	0.000	0.000
7	0.000	0.000	0.000
8	0.000	0.000	0.000
9	0.000	0.000	0.000
10	0.000	0.000	0.000
11	0.000	0.000	0.000
12	0.000	0.000	0.000
13	0.000	0.000	0.000
14	0.000	0.000	0.000
15	0.000	0.000	0.000
16	0.000	0.000	0.000

Item	Description
<i>PoC/PoW</i>	<i>PoC/PoW</i> port number
<i>Current (mA)</i>	Real-time current value
<i>Voltage (V)</i>	Real-time voltage value
<i>Power (W)</i>	Real-time power value

4.2.7 Alarm


The software provides several alarm methods, including red icon, red text, and sound, etc.

➤ Alarm Icons:

Some examples of alarm icons include:

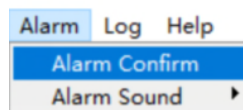
: Server offline

: Device offline

: Offline or no signal

➤ Alarm Confirm:

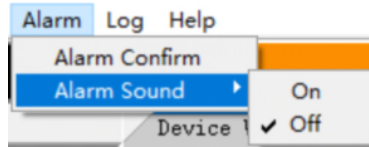
The *Alarm Confirm* functions allow users to turn off alarm sound when users have received, processed, or choose to ignore the alarm. Click *Alarm > Alarm Confirm* to turn off the alarm.



➤ Alarm Sound:

To turn on/off the alarm sound function, click *Alarm > Alarm Sound* to toggle the status

between *On* and *Off*. When Alarm Sound is selected as *Off*, no alarm sound will be triggered. Other alarm methods are not affected.



4.2.8 Log

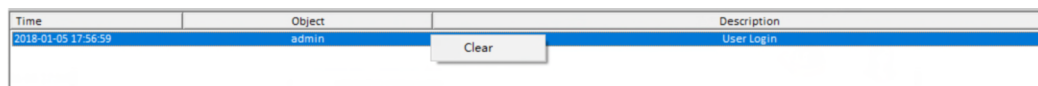
➤ Real-Time Log

The list under the display panel shows the log information of all EoC devices, including login information, PoC disconnection, and EoC warning, etc.

Time	Object	Description
2017-07-11 11:33:22	admin	User Login
2017-07-11 11:33:33	0.0.0.0	Chassis Offline
2017-07-11 11:34:15	admin	User Login
2017-07-11 11:34:25	dd	User Login
2017-07-11 11:34:31	0.0.0.0	Chassis Offline
2017-07-11 11:34:52	admin	User Login
2017-07-11 11:34:58	0.0.0.0	Chassis Offline
2017-07-12 10:20:39	admin	User Login
2017-07-12 10:20:46	0.0.0.0	Chassis Offline
2017-07-12 10:23:00	admin	User Login
2017-07-12 10:23:06	0.0.0.0	Chassis Offline
2017-07-12 10:23:25	172.16.20.200	Chassis Offline
2017-07-12 10:23:26	172.16.20.200	Chassis Online
2017-07-12 10:23:36	172.16.20.200	Chassis Offline
2017-07-12 10:23:37	172.16.20.200	Chassis Online
2017-07-12 10:23:47	172.16.20.200	Chassis Offline
2017-07-12 10:23:48	172.16.20.200	Chassis Online
2017-07-12 10:23:58	172.16.20.200	Chassis Offline
2017-07-12 10:23:59	172.16.20.200	Chassis Online
2017-07-12 10:24:09	172.16.20.200	Chassis Offline
2017-07-12 10:24:10	172.16.20.200	Chassis Online

Item	Description
<i>Time</i>	Log generation time, accurate to a second
<i>Object</i>	EoC device IP address or username of the generated log
<i>Description</i>	Detailed log information

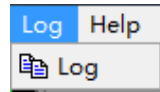
To delete ALL logs, right click any area in the list and click *Clear*.



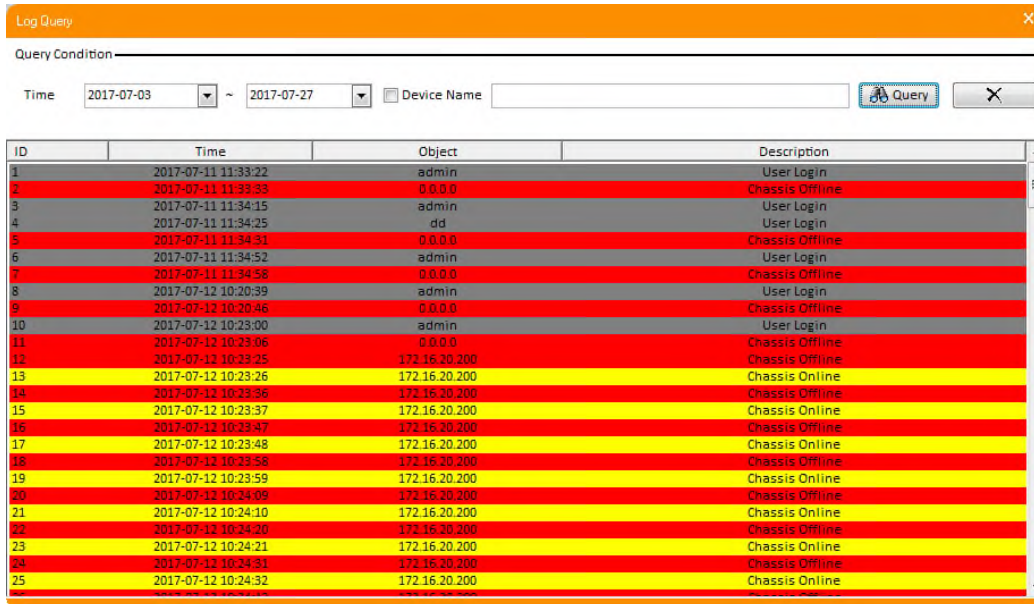
The deleted logs can still be found in the Log Query.

➤ Log Query

The *Log* menu allows for log viewing and deletion.



Click *Log > Log* to enter the *Log Query* dialog.



Four major elements of the logs are displayed in the list:

Item	Description
<i>ID</i>	ID number of the log
<i>Time</i>	Creation time of the log, accurate to a second
<i>Object</i>	EoC device IP or username that creates the log
<i>Description</i>	Detailed log information

Select the time range (starting time must be earlier than ending time) and click the *Query* button to search for logs created during the time.

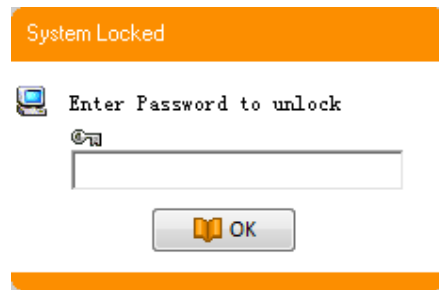
To acquire the logs of a specific EoC device, check *Device Name* and input name of the EoC device, then click *Query* to display the wanted logs.

To delete a log, select it by clicking it, then click the *Delete* button.

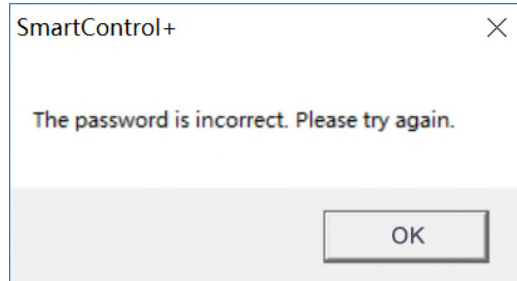
4.2.9 Lock System

Lock System is a basic function that requires password from users to block intruders from the system.

To use Lock System, click *System > Lock System*, and the *System Locked* dialog would pop up with hint *Enter Password to unlock*. Input the correct password of current user and click *OK* to re-enter the management system.



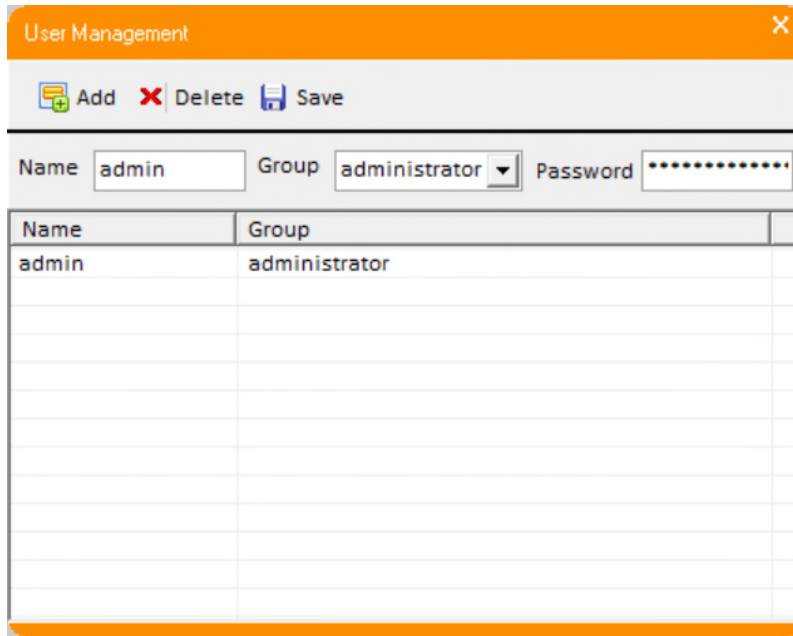
If the password is incorrect, the following dialog would appear. Re-enter the password to login the system.



4.2.10 User Management

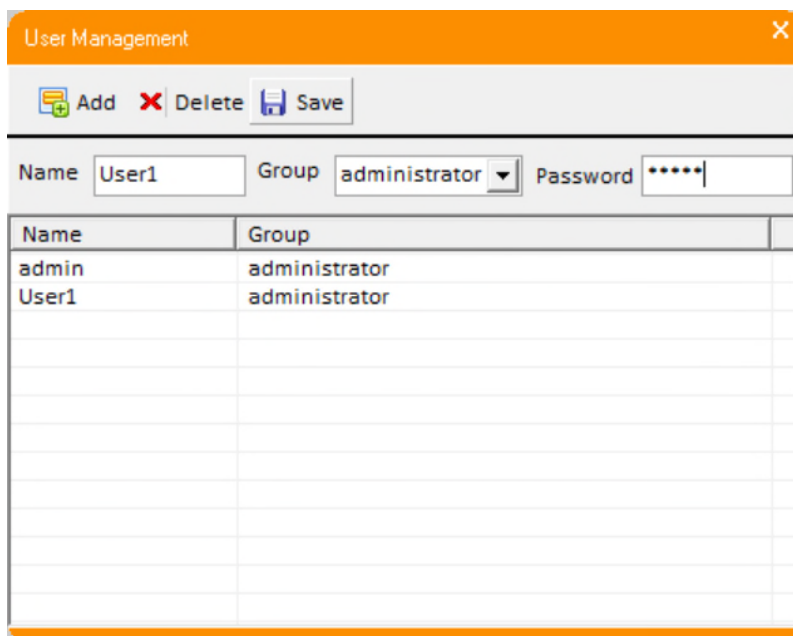
The *User Management* function allows user management operations such as *Add*, *Delete*, and *Modify*.

Click *System > User Management*, the *User Management* dialog will appear with a list of all users.



To create a new user:

Click the *Add* button, input *Name* and *Password* following the hint and select *Group*, then click *Save*. The new user name will be displayed in the list.



To delete a user:

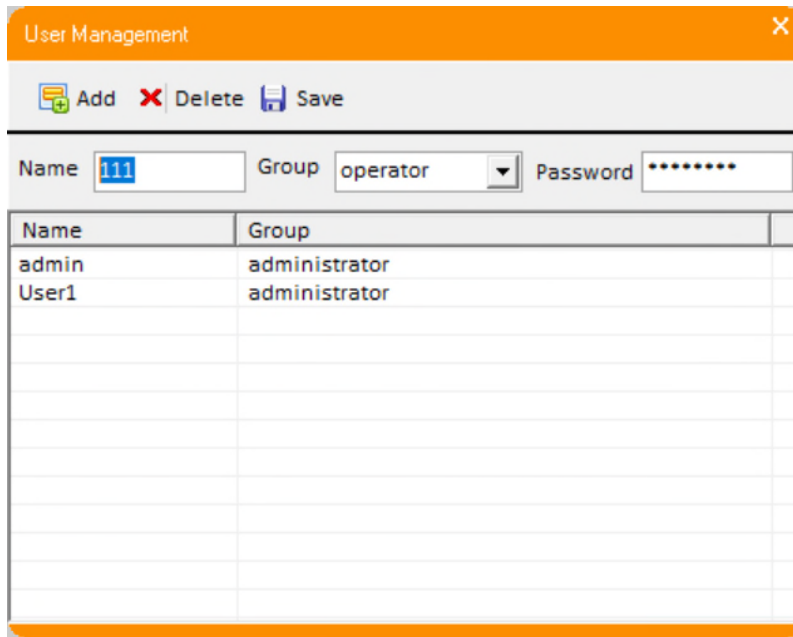
In the user list, select a user by clicking on it, then click the *Delete* button. Deleted users

cannot login the net management system.

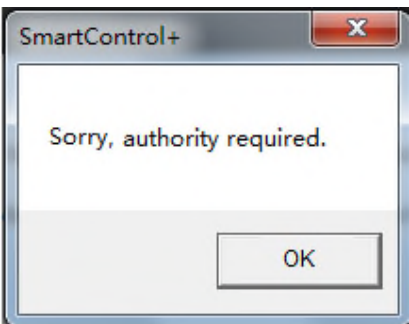
Note: Administrator account “admin” cannot be deleted. Users grouped as administrators cannot be deleted by operators or monitors.

To modify user information:


To change the name, password or group of users, select a user by clicking on it, and change the information in the bar above. Click *Save* to save the changes.



Note: This operation can only be executed by administrators. Any other’s attempt would trigger the dialog as follows:



4.3 Uninstallation

To uninstall the software, open file *PoC PoW Management System > Client* under your installation directory, and click  Uninstall . Follow the prompts to uninstall.

5 Web Management Interface

Setup

This Web management interface is accessible through IE11, Firefox, and Chrome.

Login

Enter the IP address (default IP address: *192.168.1.200*) in the navigation bar of your browser, and an authorization dialog will pop up. Enter the user name and password (default user name: *admin*, password: *admin*) to login.

System Status

The following screenshot shows the web page after successful login. This System Status page shows the status of all the configurable items in the interface.

System Status

Power Status: on

IP-Link Status

Port	Status	Port	Status	Port	Status
1	Linked	2	Linked	3	Unlinked

U-Link Status (UTP link)

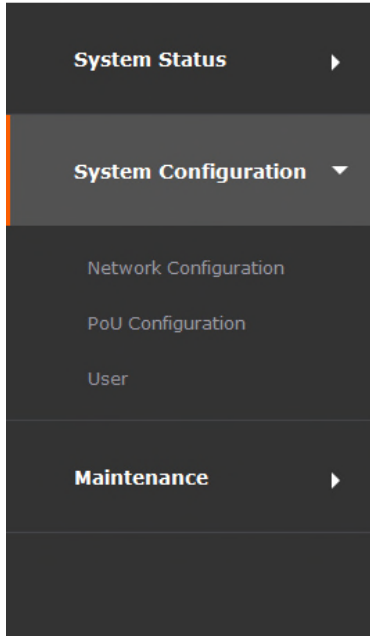
Ports	Status	Ports	Status	Ports	Status	Ports	Status
1~4	Linked	5~8	Linked	9~12	Linked	13~16	Linked

Port Status (PoU)

Port	Status	Port	Status	Port	Status	Port	Status
1	OK	5	OK	9	NC	13	OK
2	OK	6	OK	10	OK	14	NC
3	OK	7	OK	11	OK	15	OK

Network Configuration

Click *System Configuration > Network Configuration* to configure IP, subnet mask, and MAC on this page.



Network Configuration

Fixed IP Address

IP Address

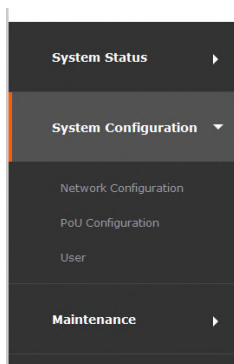
Subnet Mask

Gateway IP

MAC

PoU Configuration

Click *System Configuration > PoU Configuration*. To enable/disable PoU function of any port, select On/Off on the right of the port number, and then click *Save*.

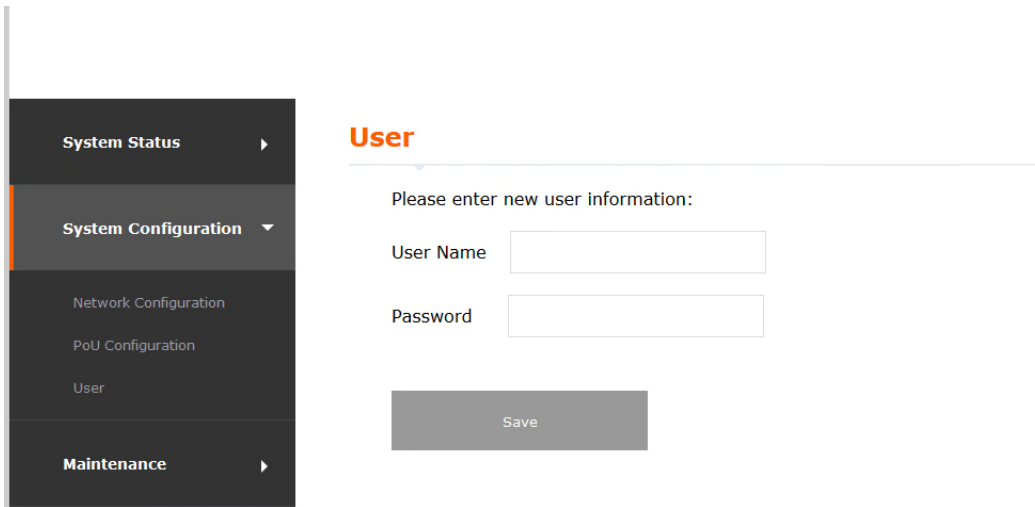


PoU Configuration

Port	Enable	Port	Enable	Port	Enable	Port	Enable
1	<input type="button" value="On"/>	5	<input type="button" value="On"/>	9	<input type="button" value="On"/>	13	<input type="button" value="On"/>
2	<input type="button" value="On"/>	6	<input type="button" value="On"/>	10	<input type="button" value="On"/>	14	<input type="button" value="On"/>
3	<input type="button" value="On"/>	7	<input type="button" value="On"/>	11	<input type="button" value="On"/>	15	<input type="button" value="On"/>
4	<input type="button" value="On"/>	8	<input type="button" value="On"/>	12	<input type="button" value="On"/>	16	<input type="button" value="On"/>

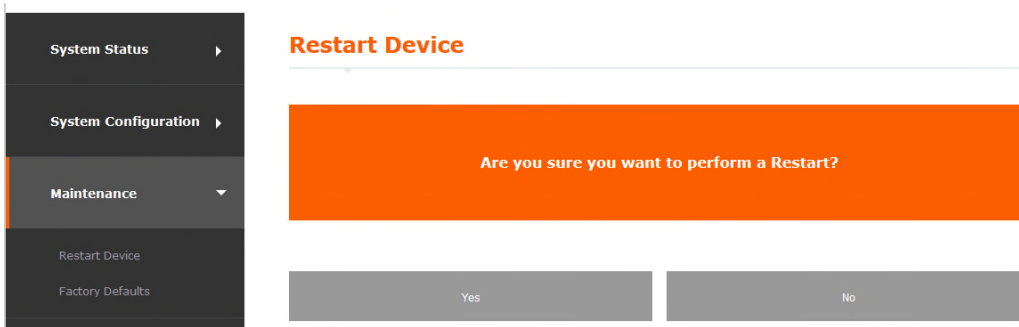
Change User Name and Password

Click *System Configuration > User* to change user information on this page. Enter new user name and password, then click *Save* to save the changes.



Device Restart

To perform a device restart, click *Maintenance > Restart Device*, and then click *Yes*.



Factory Defaults

To restore the device to factory defaults, click *Maintenance > Factory Defaults*, and then click *Yes*.

