



Under-Cabinet Lighting System installed in a kitchen.

Power galore without a single outlet in sight

Make dark spaces shine. Relocate outlets to suit your workflow needs. Add lights, speakers, USB charging and portable device docks to build your dream kitchen. The Legrand® adorne® Under-Cabinet Lighting System is a fully customizable, modular solution for eliminating kitchen clutter. Because it's modular, it's compatible with any kitchen layout and can be hard-wired or plugged into any home wiring configuration. While the adorne Under-Cabinet Lighting System was designed with kitchens in mind, it can also be used in offices, hospitality and healthcare applications. Best of all, once it's installed, you'll never know it's there and you'll wonder how you survived without it.

Features & Benefits

- **Modular Track available in four lengths.** The backbone of the system provides convenient and relocatable access for power outlets, LED lighting, USB charging and digital music and it all tucks away out of sight under any size cabinet. Fits any size cabinet width from 12" up. Track snaps together for easy installation and wiring.
- **Removable Modules.** Snap-in modules are interchangeable, so access to power or USB charging is as easy as swapping modules. Modules can also be relocated or changed out as workflow or power needs change.
- **Hardwire or plug-in installation.** Easy installation to any existing residential wiring system, or simply plug-in to an existing outlet. Hardwired installation can be backfed or surface mounted with multiple 1- or 2-gang control boxes.
- **Neutral colors to complement any kitchen decor.** Available in titanium or white finishes.
- **Simple to install LED lighting.** Available in both linear and expandable slimline styles. Each LED lighting component has a correlated color temperature in the 3000K bin, and a color rendering index of over 90 to illuminate areas with warm inviting color.
- **Digital Music Kit.** Provides high-performance full, rich stereo sound with DSP (Digital Signal Processing). Bluetooth® enabled wireless speakers provide easy pairing and access to digital music libraries while USB charging keeps the music playing.
- **cETLus Listed.**

Vertical Markets

- Residential
- Retail
- Education
- Hospitality

For additional product information, instructional videos, system planning & configuration tools, visit www.adornemyhome.com

Compliance

adorne Under-Cabinet Lighting System is cETLus Listed.
ETL Listed System 100477147.

Under-Cabinet Lighting System Layout

1. Plan Your System Layout – First, determine where you want to install the system. Then measure your cabinets to determine the length of Modular Track required. Modular Track is available in three lengths and an optional Corner Connector is also available.



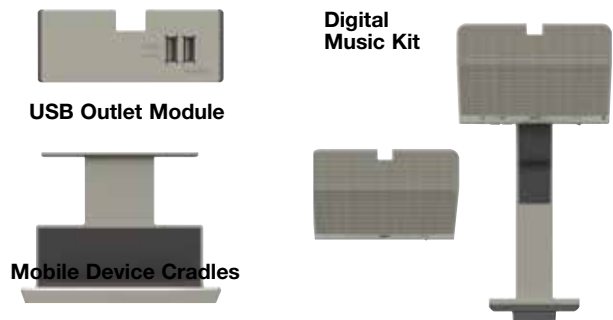
2. Choose Control Box & Power Options – Next, select the type of lighting and power connection you'd like to include. For a simple install, the Plug-In Control Box provides the easiest solution. For a hardwired installation, there are five options to choose from which enable expanded lighting control options such as dimming.



3. Add LED lights – The adorne Under-Cabinet Lighting system is only compatible with adorne LED lights. Both versions have a recommended placement of every 18", but the expandable slimline can give true uninterrupted linear task lighting along your entire countertop.



4. Select Accessories to Complete the System – The final step is to select the accessories to perfectly complement your system. adorne offers a range of options, including USB charging ports, mobile and tablet cradles, and a Digital Music Kit. Each of these accessories provides flexibility in that it can be added or removed at any time – simply swap it with an existing outlet or blank module to increase your system capabilities.



For additional product information, instructional videos, system planning & configuration tools, visit www.adornemyhome.com

Under-Cabinet Lighting System LED Lighting

New Adorne extendable slimline lights provide users with continuous, high quality task lighting on counters that is highly efficient. Just pick the LED driver that matches the length of the cabinet section, and add the appropriate amount of slimline lights. Drivers can be mounted underneath the cabinets, or extender cables can be used to hide the drivers in or above cabinets. Jumper cables are available to bypass obstructions, or to give breaks in the lights to match the user's vision.

Under-Cabinet Lighting System LED Lighting Ordering Information

ALSLED12TM4
ALSLED12W4

12" LED Slimline Light – 4.83 Watts, 328 Lumens, correlated color temperature: 3000 kelvin, color rendering index: 93.

Country of Origin: China



ALSLED6TM4
ALSLED6W4

6" LED Slimline Light – 2.38 Watts, 158 Lumens, correlated color temperature: 3000 kelvin, color rendering index: 93.

Country of Origin: China



ALSLED60TM1
ALSLED60W1

60 Watt LED Dimmable Driver – Recommended for powering between 5 to 10 feet of Slimline lights (25 - 50 Watts, Minimum 24 Watts).

Country of Origin: China



ALSLED30TM1
ALSLED30W1

30 Watt LED Dimmable Driver – Recommended for powering between 1 to 5 feet of Slimline lights (4 - 25 Watts, Minimum 4 Watts).

Country of Origin: China



ALSJ8C8TM4
ALSJ8C8W4

8" Joiner Cable – Cable can be used to place an 8" space between two lights, or paired with another cable for an even longer space between two lights.

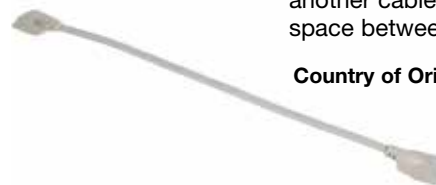
Country of Origin: China



ALSJ14C14TM4
ALSJ14C14W4

14" Joiner Cable – Cable can be used to place an 8" space between two lights, or paired with another cable for an even longer space between two lights.

Country of Origin: China



ALSJTTM4
ALSJTTW4

Tee Cable – Cable allows you to split the power from a driver into two different directions.

Country of Origin: China



ALSLEPC36TM4
ALSLEPC36W4

36" Power Cable Extender – This kit allows you to extend the leads on the driver to expand the places it be hidden out of sight.

Country of Origin: China



For additional product information, instructional videos, system planning & configuration tools, visit www.adornemyhome.com

Under-Cabinet Lighting System LED Lighting

The original Adorne light rail is the simplest way to add task lighting to your counters. With a built in driver, simply add lights wherever they are needed to the adorne modular track. For the best coverage, it is recommended to place a light every 18 inches.

Under-Cabinet Lighting System LED Lighting Ordering Information

ALLNLEDTM4

LED Linear Light – 8 Watts, 280 lumens, correlated color temperature: 3000 kelvin, color rendering index: 95.

Country of Origin: China



ALEXTLEDTM4

Light Extender – Enables adorne LED lights to be mounted up to 22" from backsplash by extending cord length beyond default 11". Ideal for corner cabinet installations.

Country of Origin: China



Under-Cabinet Lighting System Modular Track Ordering Information

APMT12TM2 APMT12W2

12" Modular Track – Includes one Outlet Module and one Blank Module. Can support up to two LED lights. Provides 120V power via 15A outlet modules and 20A pass-through. Module openings are 6" on-center. Available in titanium (APMT12M2) or white (APMT12W2).

Country of Origin: Mexico



APMT18TM4 APMT18W4

18" Modular Track – Includes one Outlet Module and one Blank Module. Can support up to two LED lights. Provides 120V power via 15A outlet modules and 20A pass-through. Module openings are 9" on-center. Available in titanium (APMT18M2) or white (APMT18W2).

Country of Origin: Mexico



APMT27TM2 APMT27W2

27" Modular Track – Includes two Outlet Modules and one Blank Module. Can support up to three LED lights. Provides 120V power via 15A outlet modules and 20A pass-through. Module openings are 9" on-center. Available in titanium (APMT27M2) or white (APMT27W2).

Country of Origin: Mexico



For additional product information, instructional videos, system planning & configuration tools, visit www.adornemyhome.com

Under-Cabinet Lighting System Modular Track Ordering Information

APST9TM1
APST9W1

Short Modular Track – For use with narrow single cabinets. Back feed power from inwall wiring. Unit is 10 1/4" in length with end caps. Available in titanium (APST9TM1) or white (APST9W1).

Country of Origin: Mexico



APME18TM2
APME18W2

18" Modular Track Extender – Enables a perfect fit for any kitchen. Simply cut to length (minimum of 6") and attach to end of Modular Track. Does not contain any module openings. Available in titanium (APME18M2) or white (APME18W2).

Country of Origin: Mexico



APCCTM4
APCCW4

Modular Track Corner Connector – Use with installations that include a right-angle corner to connect two Modular Tracks. Allow 3" on each side for installations with Corner Connectors. Available in titanium (APCCTM4) or white (APCCW2).

Country of Origin: China



Under-Cabinet Lighting System Control Box Ordering Information

APCB1TM4
APCB1W4



Control Box with Paddle Dimmer – Connects to existing in-wall wiring. Fits onto end of Modular Track, adding 5" onto system length. Includes adorne 450W CFL/LED Paddle Dimmer. GFCI protection must be provided at the electrical panel. Available in titanium (APCB1TM4) or white (APCB1W4).

Country of Origin: China

APCB6TM2
APCB6W2



Control Box with Paddle Dimmer & 15A GFCI – Connects to existing in-wall wiring. Fits onto end of Modular Track, adding 5.25" onto system length. Includes adorne 450W CFL/LED Paddle Dimmer and 15A Tamper-Resistant GFCI Outlet. Available in titanium (AGFTR2152M4) or white (AGFTR2152W4).

Country of Origin: China

APCB4TM1
APCB4W1



1-Gang Control Box (No Device) – Connects to existing in-wall wiring. Fits onto end of Modular Track, adding 5" (127mm) onto system length. Provides space for 1 full size or 2 half size adorne switches. GFCI protection must be provided at the electrical panel. Available in titanium (APCB4TM1) or white (APCB4W1).

Country of Origin: China

APCB5TM1
APCB5W1



2-Gang Control Box (No Devices) – Connects to existing in-wall wiring. Fits onto end of Modular Track, adding 5 1/4" (133mm) onto system length. Provides space for 1 full size or 2 half size adorne switches. GFCI protection must be provided at the electrical panel. Available in titanium (APCB5TM1) or white (APCB5W1).

Country of Origin: China

APDWCTM1
APDWCW1



Direct Wire Connector – Enables direct wire feed of power from in-wall wiring, eliminating need for a Control Box. Connector is 6" in length. Available in titanium (APDWCTM1) or white (APDWCW1).

Country of Origin: Mexico

APCB3TM4



Plug-In Control Box – Snaps into any module opening on the track and plugs into an existing outlet to provide system power. Cord length of 11" can easily be shortened to match the distance from outlet to Modular Track. Available in titanium only.

Country of Origin: China

NOTE: As of 2014 edition of the National Electric Code, both AFCI and GFCI will be required at the panel for installation of this system. As local codes vary per jurisdiction, Please check with your local code enforcement official for more information.

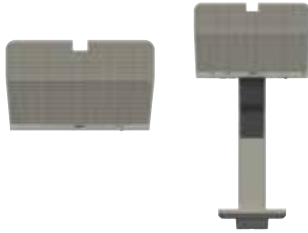
For additional product information, instructional videos, system planning & configuration tools, visit www.adornemyhome.com

Under-Cabinet Lighting System Digital Music Kit Ordering Information

AUDMTM1

Digital Music Kit – 2" (50mm) full range drivers. Digital signal processing for full, rich sound. BLUETOOTH® wireless technology is A2DP compatible. Includes USB charging capability. Available in titanium only.

Country of Origin: China



Bluetooth® is a registered trademark of Bluetooth SIG, Inc. The Bluetooth word mark and logos are owned by the Bluetooth SIG, Inc. and any use of such marks (licensee name) is under license. Other trademarks and trade names are those of their respective owners.

Under-Cabinet Lighting System Modules & Accessories Ordering Information

APTR15TM4
APTR15W4



15A Outlet Module – Provides two power outlets by snapping into any module opening. Tamper-resistant outlet is designed with a patented shutter system. Included with 12", 18", and 27" Modular Tracks. Available in titanium (APTR15TM4) or white (APTR15W4).

Country of Origin: China

APUSB3TM4
APUSB3W4



USB Outlet Module – Provides two USB charging ports for devices such as mobile phones and tablets by snapping into any module opening. Charging cable not included. Available in titanium (APUSBTM4) or white (APUSBW4).

Country of Origin: China

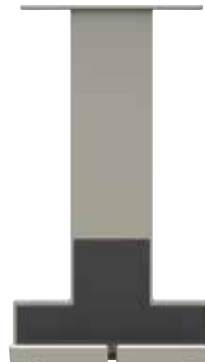
AAPCTM4
AAPCW4



Mobile Phone Cradle – Attaches anywhere along track to hold a mobile phone. Perfect for use with USB Outlet Module while charging devices. Available in titanium (AAPCTM4) or white (AAPCW4).

Country of Origin: China

AATCTM4
AATCW4




Tablet Cradle – Attaches anywhere along track to hold a tablet. Perfect for use with USB Outlet Module while charging devices. Available in titanium (AATCTM4) or white (AATCW4).

Country of Origin: China

For additional product information, instructional videos, system planning & configuration tools, visit www.adornemyhome.com

NOTE: All brand and product names referenced in this document are registered trademarks or trademarks of their respective holders.

 **NOTE:** The paper used to print this document is an environmentally responsible paper with 10% post consumer waste, with FSC and SFI Chain of Custody certifications, Lacey Act compliant. 100% of the electricity used to manufacture Flo sheets is generated with Green-e certified renewable energy.



Legrand, North America
60 Woodlawn Street
West Hartford, CT 06110
1.877.BY.LEGRAND (295.3472)
www.legrand.us

Canada
905.738.9195
www.legrand.ca

FOLLOW US

