

SETTING UP A DW SPECTRUM EDGE SERVER on

Applies to the following MEGApix Ai CloudCam models		
DWC-XSBxxxC models	DWC-XSDxxxC models	DWC-XSTxxxC models

A. BEFORE YOU START

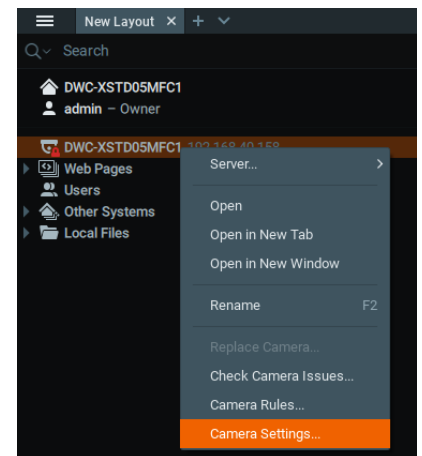
- Verify that the camera's firmware and Edge Server versions are up to date.
 - Visit <https://digital-watchdog.com/downloads> and search for your product's model number.
 - The camera's firmware can be updated from the camera's web GUI or DW's IP Finder software.
 - The camera's edge version can be updated from the camera's web GUI under SETUP > EDGE > DW Spectrum EDGE.
- Ensure that the camera's date and time settings are correctly configured.
 - On the camera's web GUI, go to SETUP > SYSTEM > DATE&TIME SETTING.
- If the camera does not have stable network access, it is recommended to turn off the time synchronization feature and manually set the time and date settings instead.
 - To disable the automatic time synchronization setting, open the camera's web GUI and navigate to SETUP > SYSTEM > DATE&TIME SETTING, and change the New camera date & time setting to "Setup manually".
- Write down the camera's serial number and product model number, and record the license key, before mounting the camera.
 - MEGApix CloudCam cameras run the DW Spectrum Edge server and come with 1 DW Spectrum Edge license preloaded.

B. FINDING YOUR DW SPECTRUM EDGE SERVER

- STEP 1:** Launch the DW Spectrum Client on a computer using the same network as the DW CloudCam camera. It is not recommended to try to merge CloudCam edge servers with different networks or with standard DW Spectrum Servers.
- STEP 2:** If the CloudCam edge server is not showing, click the "Connect to Another Server..." button at the bottom of the screen.
- STEP 3:** Enter the CloudCam edge server's IP address, port (default is 7001), and administrator username/password. You can test the connection or click OK to log in to the CloudCam edge server. (default username: admin, password: admin12345).

C. AUTHENTICATE CAMERA AND RECORD

- STEP 1:** Right-click on the CloudCam edge server from the resource tree (left-panel), then click "Camera Settings."
- STEP 2:** From the General tab, click **Edit Credentials** and type in the camera's password. Click OK to save the credential.
 * If the red lock on the camera icon is still shown, confirm the camera's password is entered correctly and retry STEP 2.
- STEP 3:** Go to the Recording tab and use the **Recording** slider to enable recording. **Recording**
- STEP 4:** Configure recording schedule for quality, FPS and recording type. Click-and-drag the mouse cursor over the recording schedule to apply the settings to multiple days and hours.
- STEP 5:** A red circle will appear next to the camera in the resource tree when camera recording is enabled.



IMPORTANT: Limit DW Spectrum Systems to no more than 30 CloudCam cameras per System. Additional cameras can share the same network but should remain unmerged and be viewable through Cloud Layout. Avoid merging CloudCam cameras (in server-mode) into the same System as regular DW Spectrum Servers.

NOTE: This document is a reference for the initial setup. See the DW Spectrum manual for full instructions and features.